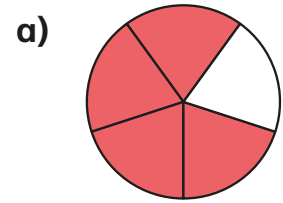
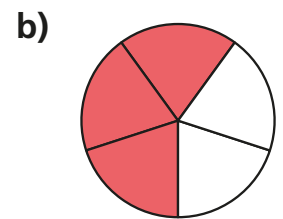


# Divide fractions by integers (1)

1 Use the diagrams to help complete the calculations.



$$\frac{4}{5} \div 4 = \square$$



$$\frac{3}{5} \div 3 = \square$$

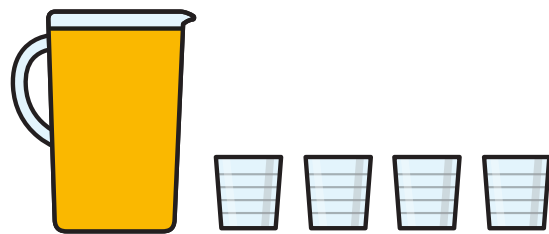


$$\frac{6}{7} \div 2 = \square$$



$$\frac{6}{7} \div 3 = \square$$

2 Huan shares  $\frac{8}{10}$  of a litre of juice equally between 4 glasses.  
How much juice is in each glass?




3 Complete the divisions.

a)  $\square = \frac{4}{5} \div 2$

b)  $\frac{12}{25} \div \square = \frac{4}{25}$

$$\square = \frac{4}{10} \div 4$$

$$\frac{12}{25} \div \square = \frac{3}{25}$$

$$\square = \frac{4}{20} \div 4$$

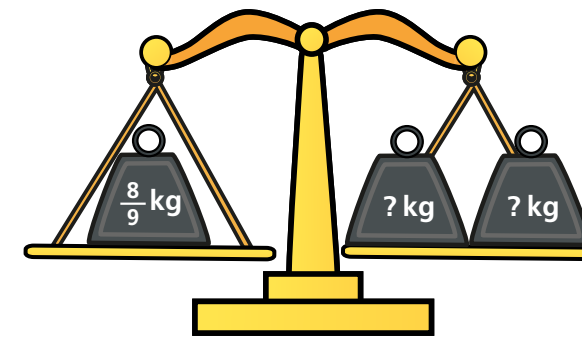
$$\frac{12}{25} \div \square = \frac{2}{25}$$

$$\square = \frac{2}{10} \div 2$$

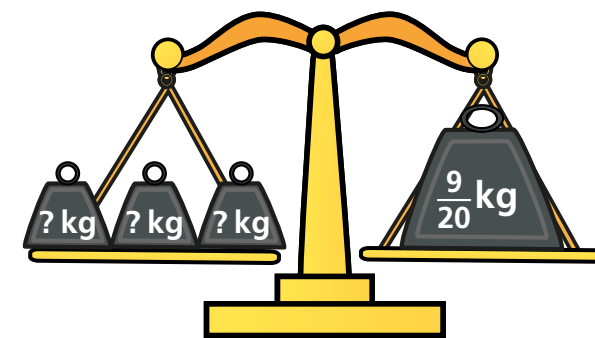
$$\square \div 6 = \frac{4}{25}$$

4 Calculate the weights.

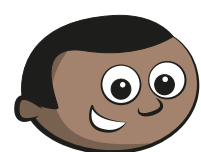
a)




b)



5 Mo works out  $\frac{10}{25} \div 5$



The answer is  $\frac{2}{5}$

a) What mistake has Mo made?

---

---

b) Draw diagrams to show why Mo is wrong.

Talk about your answer with a partner.



6 Complete the calculations. Give your answers in their simplest form.

a)  $\frac{4}{10} \div 2 = \frac{\square}{10} = \frac{\square}{5}$

d)  $\frac{18}{45} \div 2 = \square = \square$

b)  $\frac{10}{15} \div 2 = \frac{\square}{15} = \square$

e)  $\frac{24}{56} \div 3 = \square = \square$

c)  $\frac{20}{45} \div 4 = \square = \square$

f)  $\square = \square = \frac{21}{56} \div 3$

7 a) Complete the calculation.

$$\frac{6}{8} \div \square = \frac{1}{4}$$

b) Find the missing numbers to make this division correct.

$$\frac{24}{\square} \div \square = \frac{1}{20}$$

8 is a whole number.

is a fraction.

$$\frac{10}{\text{heart}} \div 2 = \frac{1}{2} \times \text{circle}$$

a) Find values for and .

=

=

b) What do you notice? Explain using diagrams or words.

