



## Oceans

Oceans cover 70% of Planet Earth. There are five oceans. They are all joined together. Some oceans have cold water and some oceans have warm water. The water moves in patterns called currents.

### VIPERS QUESTIONS

**R**

How much of the world is covered by Oceans?

**60%**

**70%**

**80%**

Currents move anything that floats in them. Currents can move ships and creatures which live in or on the ocean. Sadly, currents also move rubbish. Rubbish gets dumped in the water by people. This is bad for the ocean. We shouldn't dump rubbish. Sometimes creatures get stuck in the plastic. Sometimes they eat it. It can kill them.

### VIPERS QUESTIONS

**S**

What happens when we dump rubbish in the ocean?

**R**

What word tells you that rubbish is thrown away?

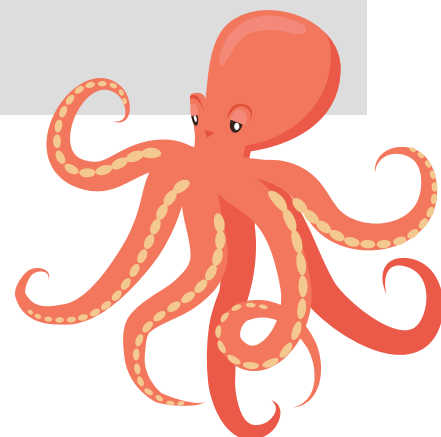
**Plastic**

**stuck**

**dumped**

The biggest ocean in the world is the Pacific Ocean. Pacific means 'peaceful'. The Pacific Ocean covers 30% of Planet Earth. The second largest ocean is the Atlantic Ocean. In the Atlantic Ocean there is a place called the Bermuda Triangle.

Ships and planes have disappeared in the Bermuda Triangle. Some people are scared of it. They think it is a strange part of the ocean. Some people say there are ghosts and aliens there! This isn't true. There is nothing to be scared of. It just has really bad weather.



## VIPERS QUESTIONS

**V**

What word means 'gone missing?'

**Peaceful**

**Bermuda**

**Disappeared**

**I**

Why are some people scared of the Bermuda Triangle?

There are three other oceans. The next biggest is the Indian Ocean. Then there is the Southern Ocean. The smallest ocean in the world is the Arctic Ocean. The Arctic Ocean is near the North Pole. The Arctic Ocean is usually covered in ice!

Sometimes the ice is thick. The ice is thickest in winter. Sometimes the ice is thin. The ice is thinnest in summer. Now the world is getting hotter, so the ice is melting more. Animals like Polar Bears live on the ice. They need it. We have to try stop it melting.

## VIPERS QUESTIONS

**I**

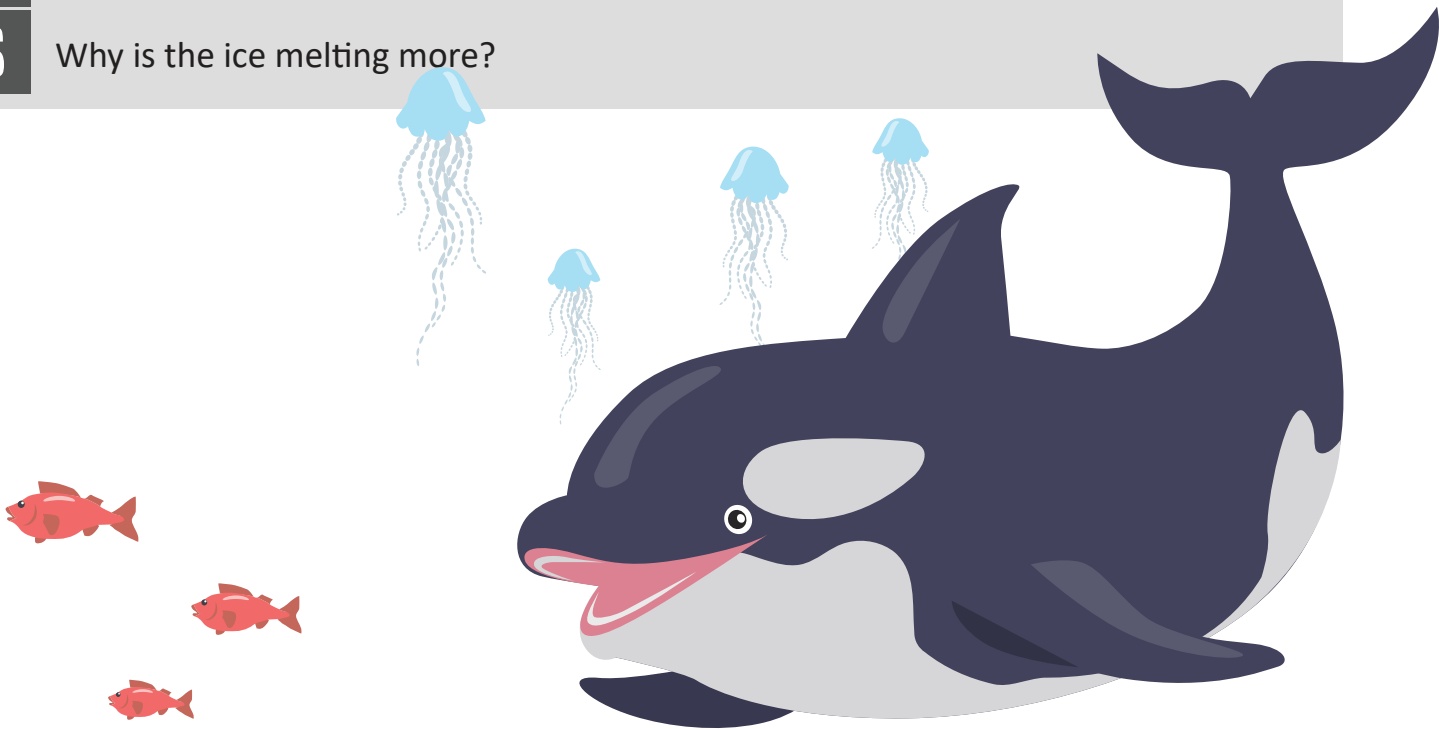
Which is the coldest ocean?

**R**

When is the Arctic ice thickest?

**S**

Why is the ice melting more?



Answers:

R: 70%

S: Sea Creatures get stuck / eat it

V: Disappeared

I: Plane crashes / Ships have sank / it's strange

I: Arctic

R: Winter

S: The world is getting hotter